

# Fundamentals of Music Practice Exercises

## Writing Noteheads *In the Staff*

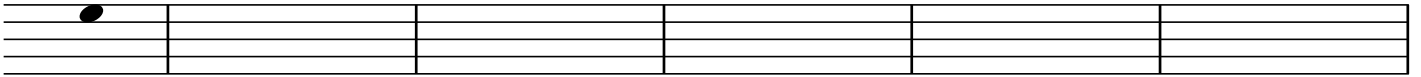
For instructions, visit <http://www.music-paper.com/how-to-draw-music-notes.html>

Reminders:

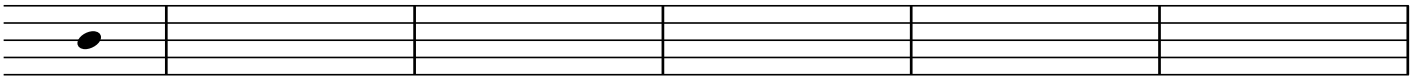
Focus on neatness and use a pencil!

Match each example as closely as possible. Write slowly and carefully.

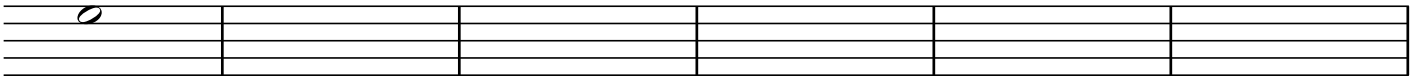
*Write a closed notehead in the top space of each of the blank measures below, exactly as shown in the example.*



*Write a closed notehead on the middle line of each of the blank measures below, exactly as shown in the example.*



*Write an open notehead in the top space of each of the blank measures below, exactly as shown in the example.*



*Write an open notehead on the middle line of each of the blank measures below, exactly as shown in the example.*

